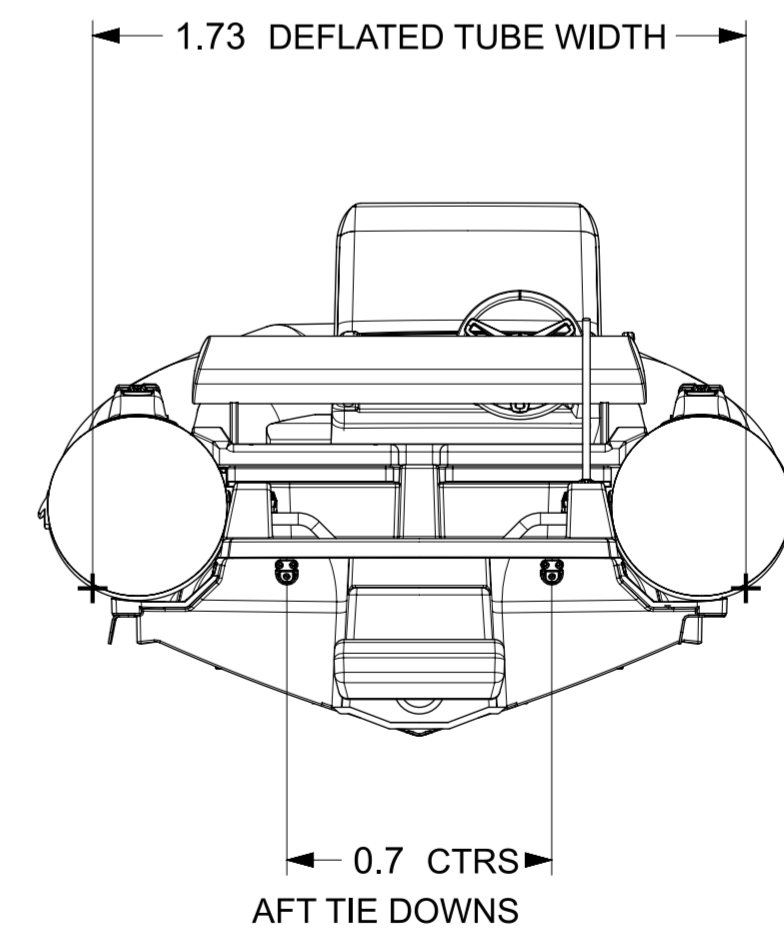
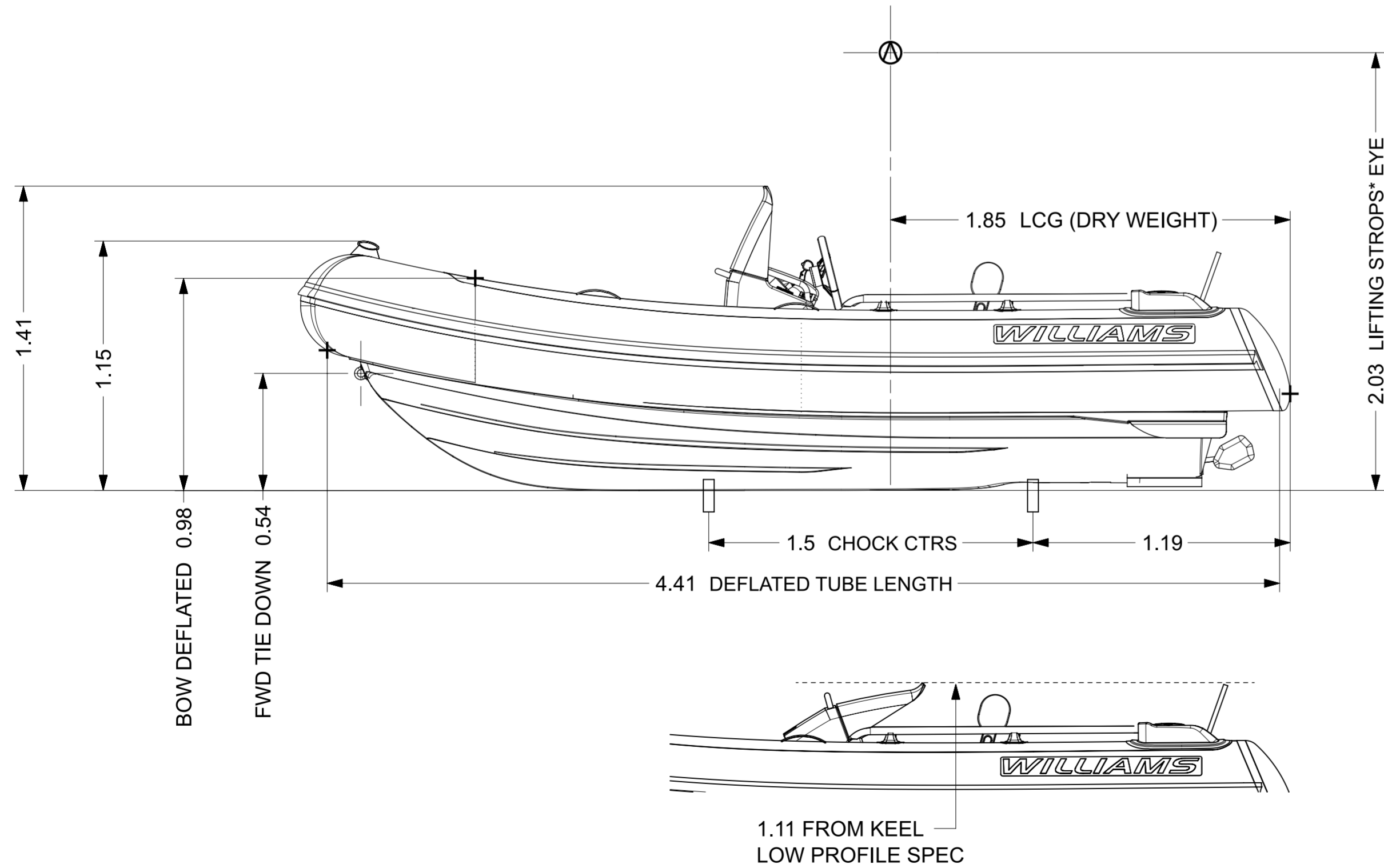
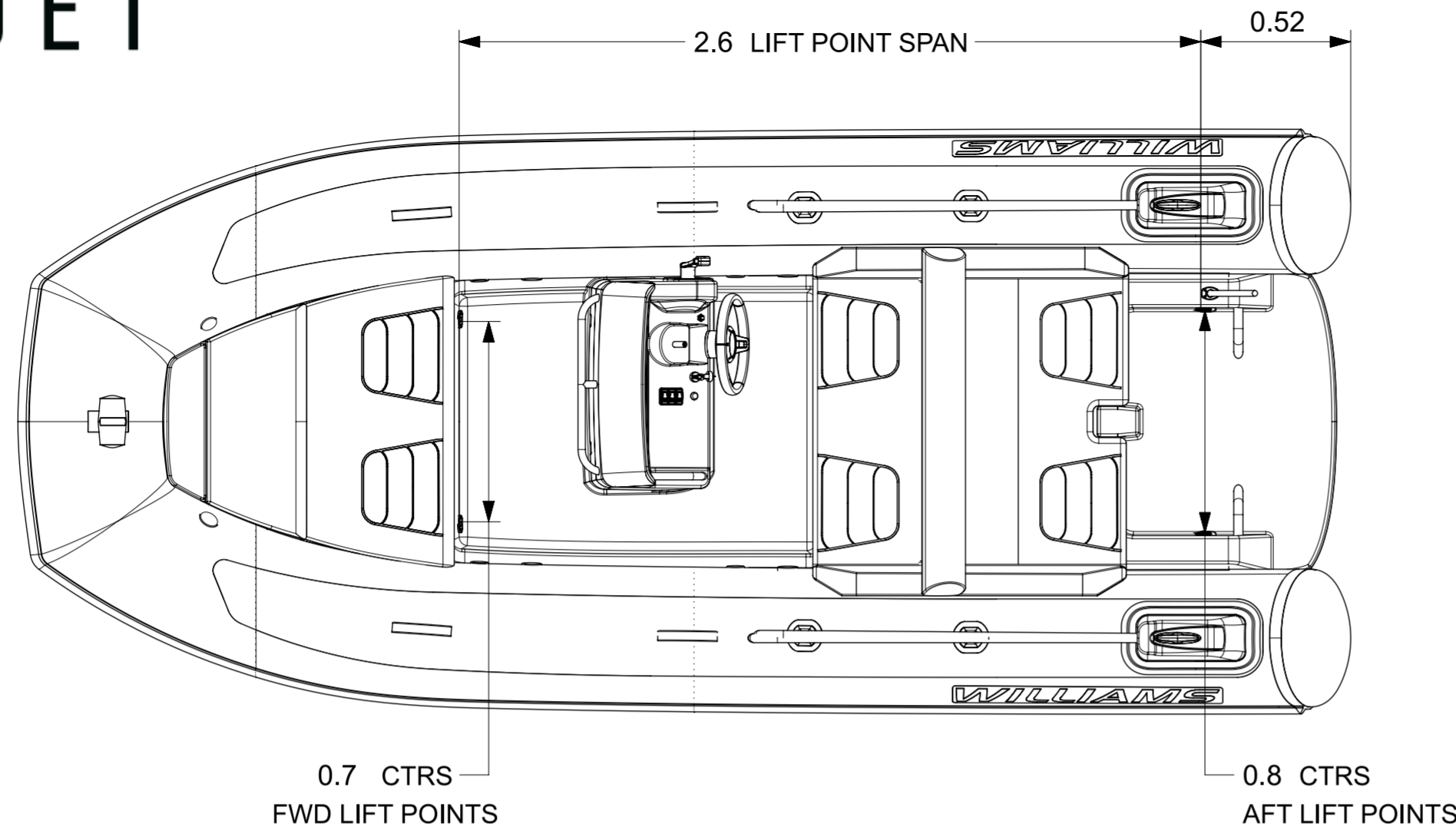


SPORTJET 460



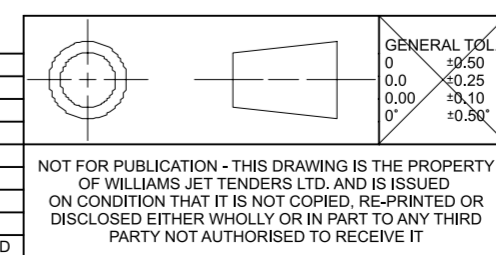
LOA	4.59m ±1%
BEAM OA	2.01m ±1%
DRAFT (FULLY LOADED)	0.42m
ENGINE	Rotax ACE 170 ECT
POWER	170hp ≅ 125.03kW
DRY WEIGHT	607kg
SEATING CAPACITY	6
FUEL	PETROL
FUEL CAPACITY	100L
MAX. SPEED	48mph ≅ 77kph
No. TUBE COMPARTMENTS	5
CE DESIGN CATEGORY	C

NOTES:

- LENGTH / BEAM TOLERANCE DUE TO VARIATION IN TUBE PRESSURE.
- AVERAGE DRY WEIGHT STATED;
ACTUAL WEIGHT DEPENDENT ON OPTIONS FITTED.
- LOW PROFILE:
 - DEFLATE TUBES (AUTO BOW TUBE INFLATOR OPTION REQUIRED*)
 - QUICK RELEASE STEERING WHEEL
 - FULLY FOLD DOWN HELM
- STANDARD CHOCKS*: 99-1460.
CHOCK PROFILES DRAWING: RD472.

*OPTIONAL ACCESSORY

REV.	DATE	DETAILS	FZ	OB
1	18/09/2023	DOCUMENT PRODUCTION	FZ	OB



DRAWN	FZ	DATE	18/09/2023
APPVD	OB		
PROJECT:	-		
INSPECTION LEVEL:	-		
MATERIAL & FINISH	-		

WILLIAMS

TITLE: **SPORTJET 460 (2024MY)**

PART NO.: WPT-000460SJ-2024MY-DATASHEET -dwg.1

SCALE 1:20

SHEET 1 OF 1

NOT FOR PUBLICATION - THIS DRAWING IS THE PROPERTY OF WILLIAMS JET TENDERS LTD. AND IS ISSUED ON CONDITION THAT IT IS NOT COPIED, RE-PRINTED OR DISCLOSED EITHER WHOLLY OR IN PART TO ANY THIRD PARTY NOT AUTHORISED TO RECEIVE IT

REMOVE ALL BURRS & BREAK SHARP EDGES
GENERAL SURFACE FINISH Ra 1.6UM
DIMENSIONS IN MM UNLESS STATED
DO NOT SCALE DRAWING